



COLORADO
Department of Education

State Facilities Incentive Grant – CDE Update

September 5, 2025

www.coloradoleague.org



PLEASE

RE-NAME "name, school"
CHAT when you can
MUTE while not speaking

Thank You to Our Dedicated Premium Sponsors



Agenda

- Introductions
- What is the State Facilities Incentive Grant?
- CDE Grant Activities
 - Charter School Facility Assistance Program Update
 - Charter School Facility Finance Certification Program
- Upcoming in 2025-26
- Questions



Introductions

Charter School Office

[Paola Paga](#) (Director)

- Charter school questions
- Program Director to CSP-SFIG
- Overseeing work from office

[Janyse Skalla](#) (Senior Policy Consultant)

- State waiver approvals
- Reports (Charter School, Innovation)
- Fiscal Notes/Implementation Reports
- School Code Review Committee
- Home School

[Nadine Penn](#) (Special Education Compliance Monitor)

- Collaboration with ESSU
- Figuring out the barriers with students accessing school choice

[Peg McMillen](#) (Facility Finance Specialist)

- Overseeing the Charter School Facility Finance Certification Program
- Working with an Advisory Board to determine modules and mode of delivery

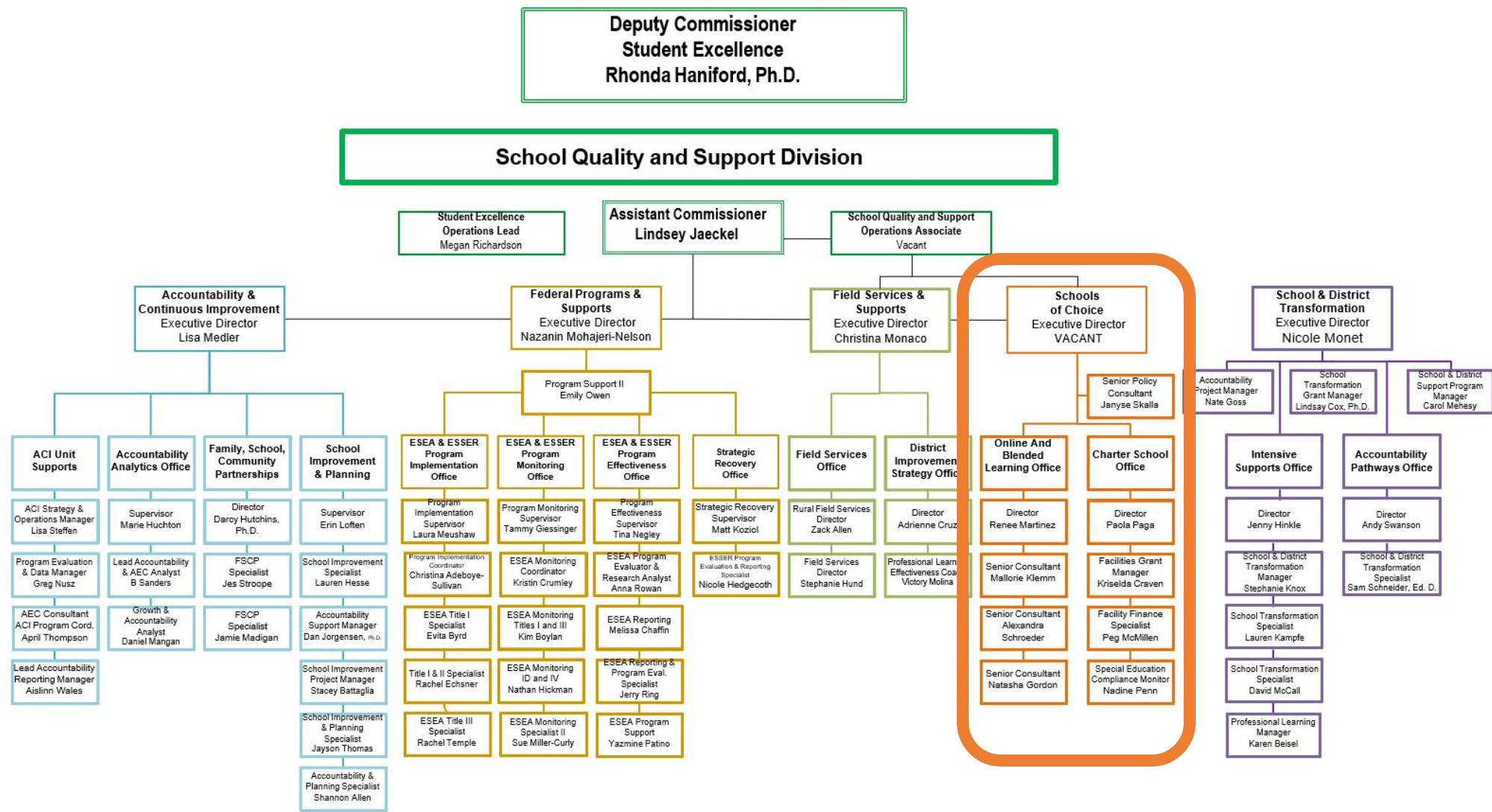
[Kriselda Craven](#) (Facility Grant Manager)

- Overseeing the Charter School Facility Assistance Program which will provide additional funding for charter school facility expenses.

[Jessie Steinbaum](#) (Operations Support)

- Program support
- SOC update newsletter

Schools of Choice Unit





What's the SFIG?



State Facilities Incentive Grant (SFIG)

- One of six federal grants under the larger “Charter Schools Program”
- SFIG is only awarded to State Education Agencies (i.e. CDE)
- Aims to strengthen and sustain state aid programs for charter schools
- Increases targeted funding to offset historic high cost for charter facilities
- CDE was awarded about \$38 million from 2024-2029 in October 2024.

The six CSP Grants:

| State Entity Grants (CLCS) | CMO Grants (Direct) | Developer Grants (N/A in CO) |
|---|--|---|
| National Dissemination Grants (CSI/NACSA/CACSA) | Credit Enhancement for Charter Facilities (CSFS) | State Charter School Facilities Incentive Grants (CDE) |



SFIG Grant Goals

Goal 1

Enhance the State's Charter Capital Construction Program

Starting in FY 24-25 and ending in FY 28-29, CO will disseminate **\$35,525,000 of new Federal funds** to eligible charter schools through a sub-grant structure. These funds will be highest in Year 1 and will be replaced by increased state funds by the end of the 5 years.

Goal 2

Strengthen State Capacity for High- Quality School Facilities Management and Decision Making

CDE will **create a certification program** to incentivize charter leaders to participate in high-quality training on charter school finance topics deemed critical for school success.

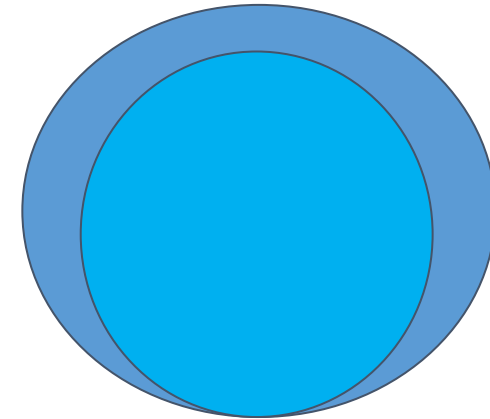
How Colorado Qualified for the Federal Grant

| Year | A. State Fund | + B. Excise Tax Revenue to Charters | +C. "One-time" or HB24-1448 Funding | Anticipated State Funding (CCAP) |
|-----------|---|---|-------------------------------------|---|
| FY 22-23 | \$ 23,939,893.00 | \$ 14,669,783.00 | | \$ 38,609,676.00 |
| FY 23-24 | \$ 24,379,016.00 | \$ 8,855,662.60 | \$ 10,000,000.00 | \$ 43,234,678.60 |
| FY 24-25 | \$ 23,935,468.00 | \$ 7,457,233.96 | \$ 11,500,000.00 | \$ 42,892,701.96 |
| FY 25-26 | \$ 24,287,686.51 \$ 23,523,071.20 | \$ 7,643,864.37 \$ 6,709,709.15 | \$ 12,000,000.00 | \$ 43,931,550.88 \$ 42,232,780.35 |
| FY 26-27* | \$ 24,641,675.07 | \$ 8,491,264.33 | \$ 13,000,000.00 | \$ 46,132,939.40 |
| FY 27-28* | \$ 24,995,663.64 | \$ 9,063,803.42 | \$ 14,000,000.00 | \$ 48,059,467.06 |
| FY 28-29* | \$ 25,349,652.21 | \$ 9,666,187.54 | \$ 15,000,000.00 | \$ 50,015,839.75 |

*Note: Future year amounts are based on budget estimates

How do the State and Federal Funds Work Together?

- State Aid Program will work pretty much the same way that it always has - direct to school accounts
- Schools must apply for the Federal Aid Program
 - Not all schools will establish eligibility
 - Funds only for allowable uses
- The per pupil calculation will work like the state aid program
($\$ \text{ Amount of Federal Award} / \text{FTE of eligible schools}$)



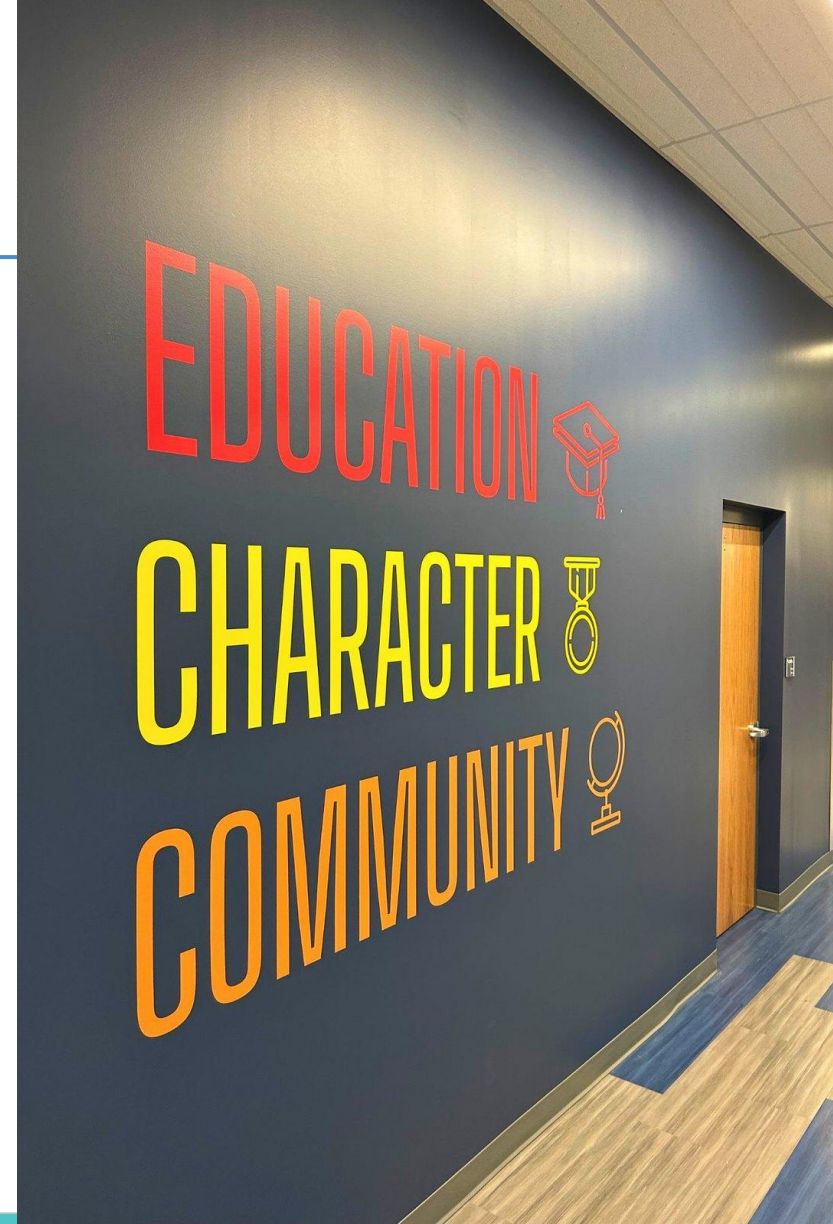


Charter School Facility Assistance (FA) Program

Allowable Use of Funds

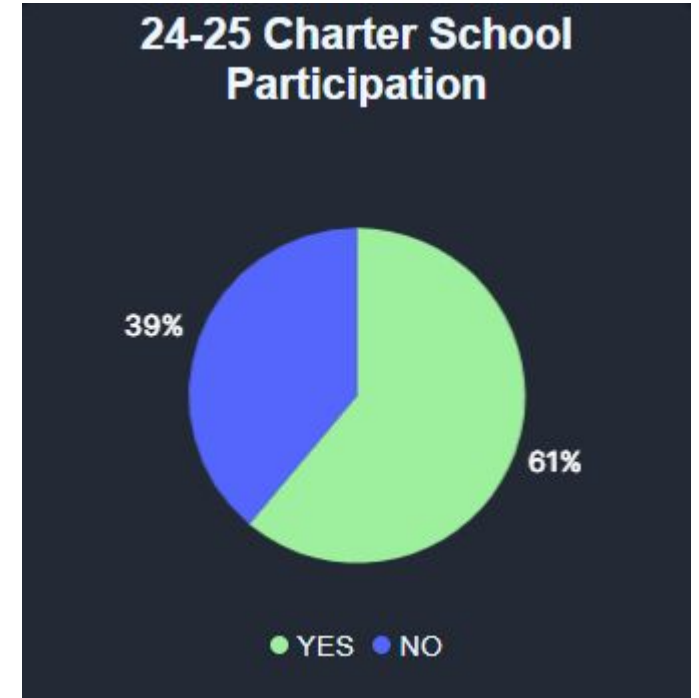
- Debt service on a school facility
- Rent/Lease
- Purchase of building or land*
- Construction* meaning -
 - Preparing drawings and specifications for school facilities projects;
 - Repairing, renovating, or altering school facilities;
 - Extending school facilities;
 - Erecting or building school facilities; and
 - Inspections or supervision related to school facilities.
- Renovation of an existing school facility*
- Leasehold improvements*

*Additional information and monitoring will be required if schools elect to use funds for these expenses



Eligibility – Year 1

- Must meet the Federal definition of a charter school (section 4310(2) of the ESEA)
- Must be serving students in the 2024-2025 school year and currently authorized by an “authorized public charter agency” as defined in section 4310(1) of the ESEA.
- Enrollment policy includes a lottery if more students apply for admission to the charter school than can be admitted.
- Charter schools must also qualify to receive state funds under the Charter School Capital Construction (CSCC) Program (state facility aid program), pursuant to C.R.S. 22-54-124.
 - Online charter schools are not eligible for either the Federal or state facility programs.



Eligibility – Year 2

- Must meet the Federal definition of a charter school (section 4310(2) of the ESEA)
- Must be serving students in the 2025-2026 school year and currently authorized by an “authorized public charter agency” as defined in section 4310(1) of the ESEA.
- Enrollment policy includes a lottery if more students apply for admission to the charter school than can be admitted.
 - Weighted lottery plans will be accepted in year 2
- Charter schools must also qualify to receive state funds under the Charter School Capital Construction (CSCC) Program (state facility aid program), pursuant to C.R.S. 22-54-124.
 - Online charter schools are not eligible for either the Federal or state facility programs.

How Much Support Can We Receive?

- The FAP numerator is known. The denominator will vary each year
- The fewer schools that participate, the larger the per-pupil award
- If we estimate ~75% participation from CSCC schools, then we estimate roughly:
 - \$139 per FTE in 2024-25
 - \$117* per FTE this Year
 - \$86* per FTE in Year 3
 - \$56* per FTE in Year 4
 - \$28* per FTE in Final Year

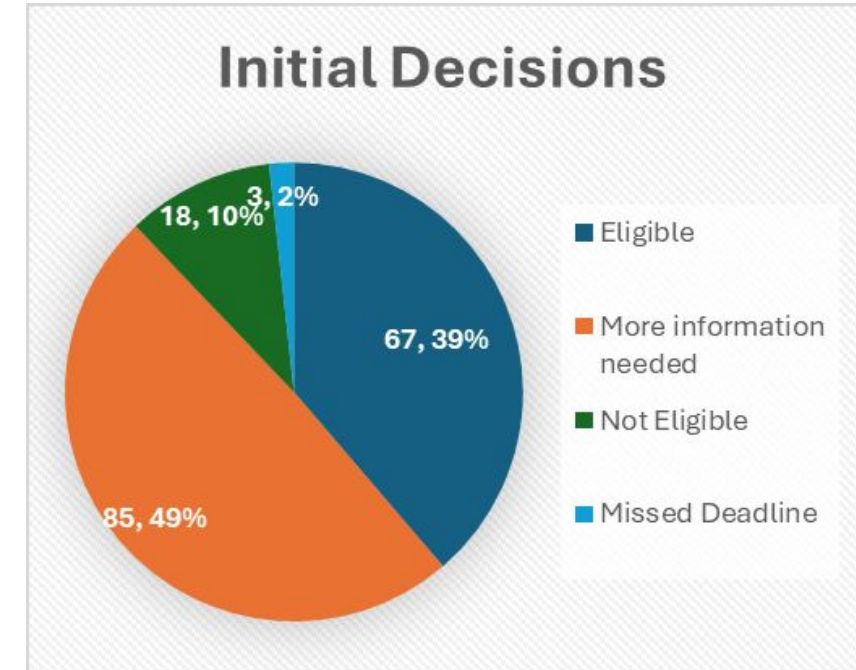
*These are all estimates. Highlighted cells on the next page are also estimates.

How Much Support Can We Receive? (shading notes estimates)

| School Year | CSCC Numerator | CSCC Denominator | CSCC Per Pupil | FAP Numerator | FAP Denominator | FAP Per Pupil |
|-------------|----------------|------------------|----------------|---------------|-----------------|---------------|
| 22-23 | \$38,609,676 | 107,655 | \$359 | – | – | – |
| 23-24 | \$43,234,679 | 109,122 | \$396 | – | – | – |
| 24-25 | \$42,892,702 | 110,409 | \$388 | \$11,025,000 | 81,000 | \$139 |
| 25-26 | \$42,232,780 | 109,863 | \$384 | \$9,800,000+ | 84,000 | \$117+ |
| 26-27 | \$46,132,939 | 114,000 | \$405 | \$7,350,000 | 85,500 | \$86 |
| 27-28 | \$48,059,467 | 116,000 | \$414 | \$4,900,000 | 87,000 | \$56 |
| 28-29 | \$50,015,840 | 118,000 | \$424 | \$2,450,000 | 88,500 | \$28 |

2024-25 FA Program

- 176 Intent to Apply and Eligibility forms completed
- Initial Decisions
 - Those not eligible was because of no lottery or having a weighted lottery)
 - Enrollment priorities and preschool programs were the top two flags for schools meeting eligibility criteria.
- \$139.028 per pupil FTE (full-time equivalent)
- 151 schools completed the FA program application
- 138 schools in “CDE Director Approved”
- CDE Obligated \$9,353,039 for 2024-25
- Unspent funds will be carried forward to 2025-2026





Charter School Facility Finance Certification Program

Facility Finance Certification Program

- Two meetings (in March and June) with the Advisory board to set and approve content goals and objectives
- Program outcome portfolio: Master planning template for school and certificate for participant
- Curriculum development vendors selected with Purchase Order in draft
- Work to begin Oct 1, 2025
- Next Advisory board meeting in November to review and approve curriculum content
- Pilot to begin early Spring 2026



Facilities Finance Certification Program

- **Module No. 1: Mission and Vision**
 - Setting context for future decisions and alignment
 - Gap Analysis
 - Charter School Unique Market Offer
- **Module No. 2: Financial Health, Financing, and Debt Capacity**
 - Underwriting requirements
 - Sources of Capital
 - Public/Private/Community partnerships
- **Module No. 3: Facility Assessments**
 - Facility Condition Index
 - Environmental Considerations
 - Operational Costs





Upcoming in 2025-26



Upcoming Launches

Goal 1

Enhance the State’s Charter Capital Construction Program (Oct/Nov 2025)



Content credentials
Generated with AI· February 20, 2025 at 11:50 PM

Goal 2

Strengthen State Capacity for High- Quality School Facilities Management and Decision Making (Mar/Apr 2026)



Content credentials
Generated with AI· February 20, 2025 at 11:50 PM



Questions?

CONTACT US ANYTIME

President

Dan Schaller | dschaller@coloradoleague.org

Civic Affairs and CLCS Action

Kyle DeBeer | advocacy@clcsaction.org

Regional Advocacy

Kyle DeBeer | advocacy@clcsaction.org

Legislation and Policy

Prateek Dutta | advocacy@coloradoleague.org

Events

Caymin Harper | events@coloradoleague.org

Communications and PR

Pete Mason | communications@coloradoleague.org

Board Training and School HR

Bill Knous | boardtraining@coloradoleague.org

New Schools and Enrollment Growth

Bill Knous | growth@coloradoleague.org

Academic Services

Karolina Villagrana | academic@coloradoleague.org

Exceptional Education

Karolina Villagrana | exceptional@coloradoleague.org

Business and Operations Support

Patti Glock | business@coloradoleague.org

League Operations and Billing

Mark Heffner | renewals@coloradoleague.org

Online at: coloradoleague.org > about > who we are > league staff



HOW DID WE DO?

Please take a moment to help us improve.



www.surveymonkey.com/r/CLCS-training



COLORADO LEAGUE *of*
CHARTER SCHOOLS

www.coloradoleague.org

charter411@coloradoleague.org