



**COLORADO**  
Department of Education

## Charter School State of the State

**Bill Kottenstette & Paola Paga**  
**Schools of Choice Unit**  
**10/29/2024**



# State of the State

- Our schools and students
- Organizational change
- Recent school finance activities
- US Dept of Ed - State Facilities Grant (SFIG)!





# Our Schools and Students

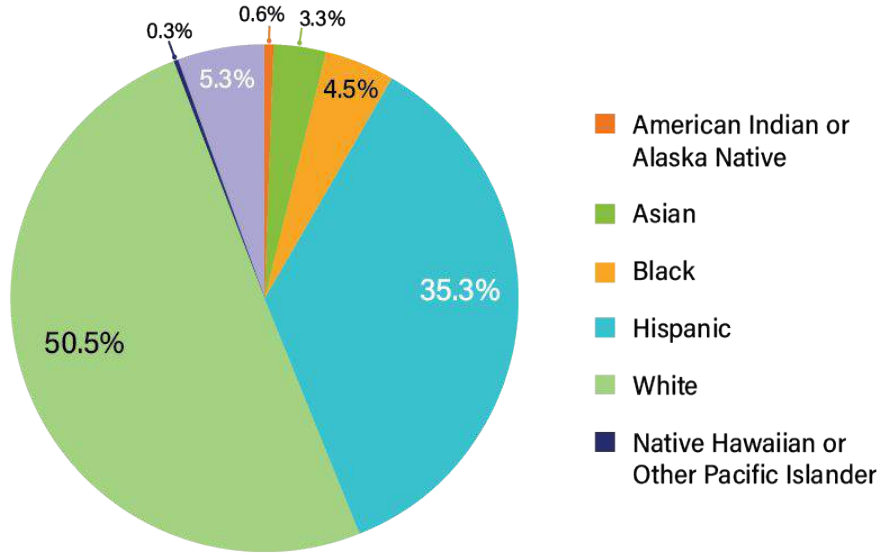
# Our schools, students, and educators

178  
SCHOOL  
DISTRICTS

1,927  
SCHOOL

881,464  
PUBLIC  
SCHOOL  
STUDENTS

## Student Demographics



\*October 2023 Data

**Eligible for Free/Reduced Lunch:**

403,231 (~46%)

**Students with Individualized Education Programs:**

113,992 (~13%)

**Multilingual Learners\*:**

95,734 (~11%)

**McKinney Vento:**

16,540 (~2%)

*\*Includes both Non-English Proficient and Limited English Proficient students*

# Our schools, students, and educators

---

178  
SCHOOL  
DISTRICTS

47 Charter Authorizers  
(26% of districts)



# Our schools, students, and educators

---

**178**  
SCHOOL  
DISTRICTS

**1,927**  
SCHOOL

261 Charter Schools  
(13.5% of schools)

# Our schools, students, and educators

---

**178**  
SCHOOL  
DISTRICTS

**1,927**  
SCHOOL

**881,464**  
PUBLIC  
SCHOOL  
STUDENTS

135,223 Charter School Students  
(15.3% of students)

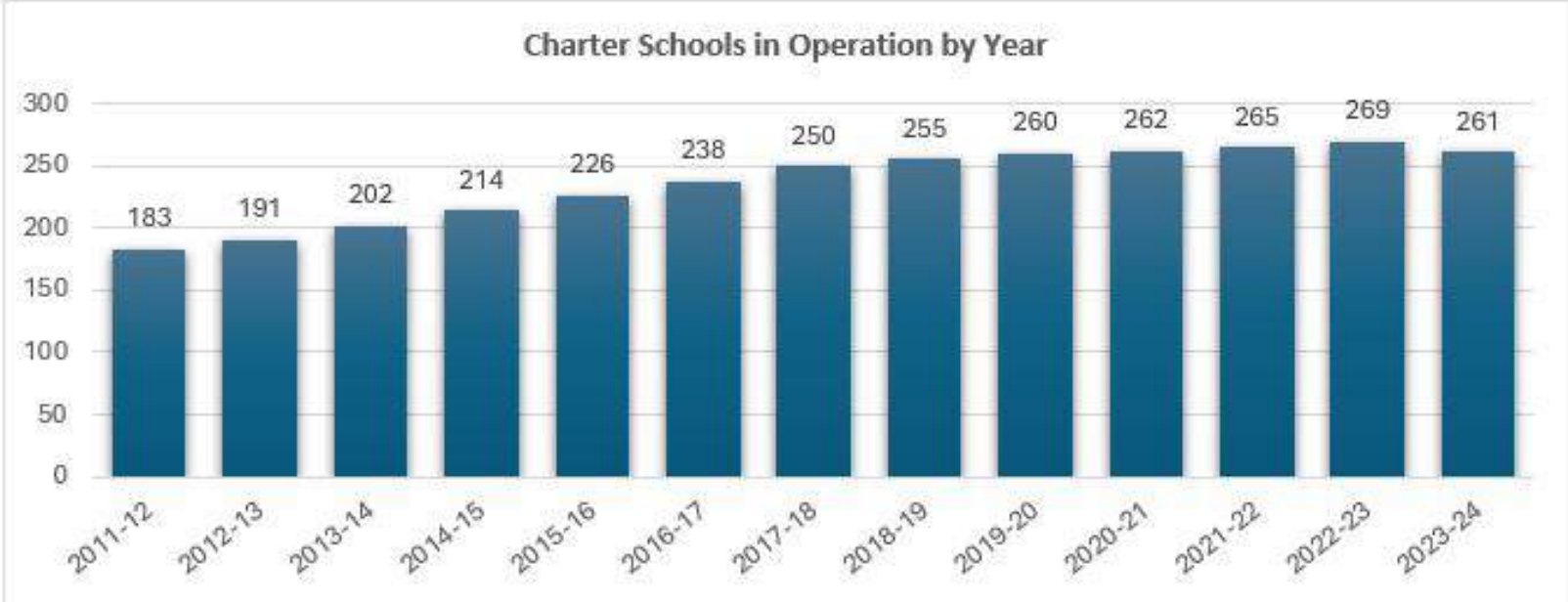
# Our schools, students, and educators

## Student Demographics

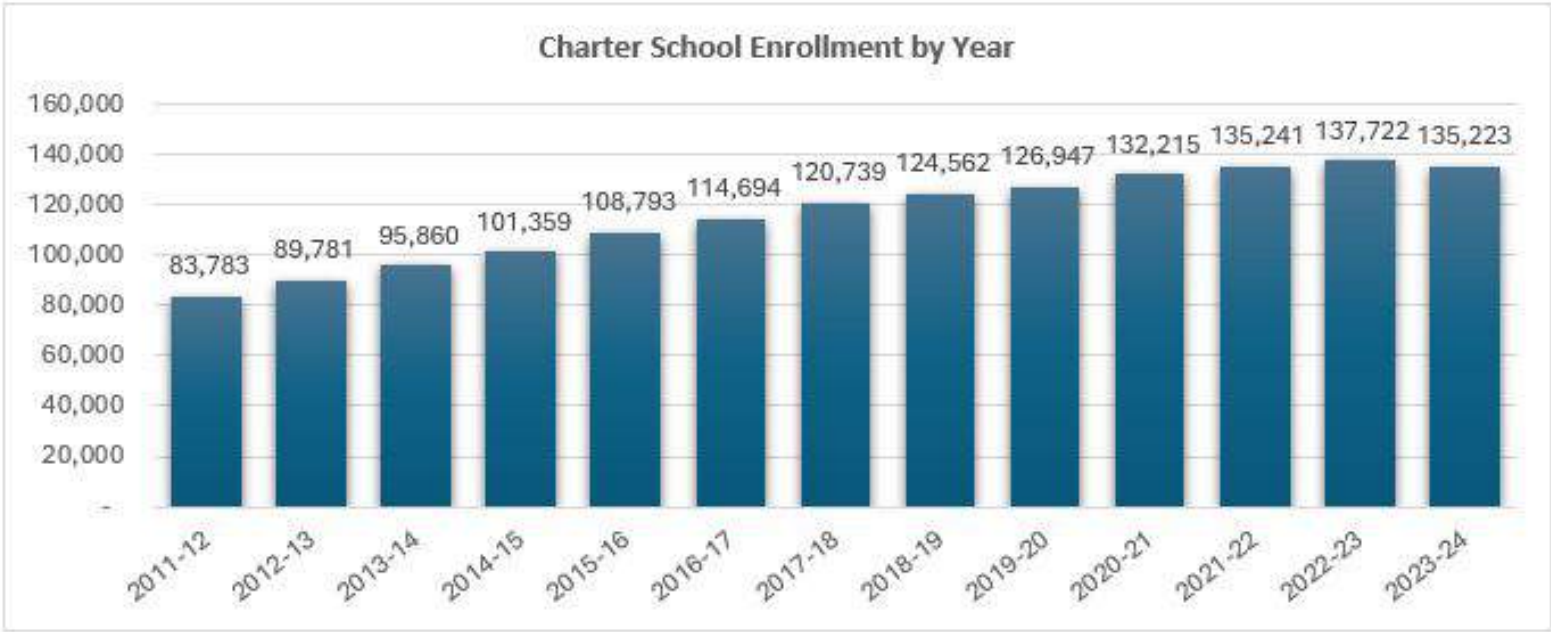
SY2023-24 Enrollment	Charter Schools	Non Charter Schools
Multilingual Learners	19,011 (14.1% of charter population)	95,498 (12.8% of non-charter population)
Free/Reduced Lunch Eligible	55,521 (41.1% of charter population)	347,710 (46.6% of non-charter population)
Students of Color	68,375 (50.6% of charter population)	368,102 (49.3% of non-charter population)
Students with Disabilities	11,888 (8.8% of charter population)	102,103 (13.7% of non-charter population)



# Charter School Growth Over Time



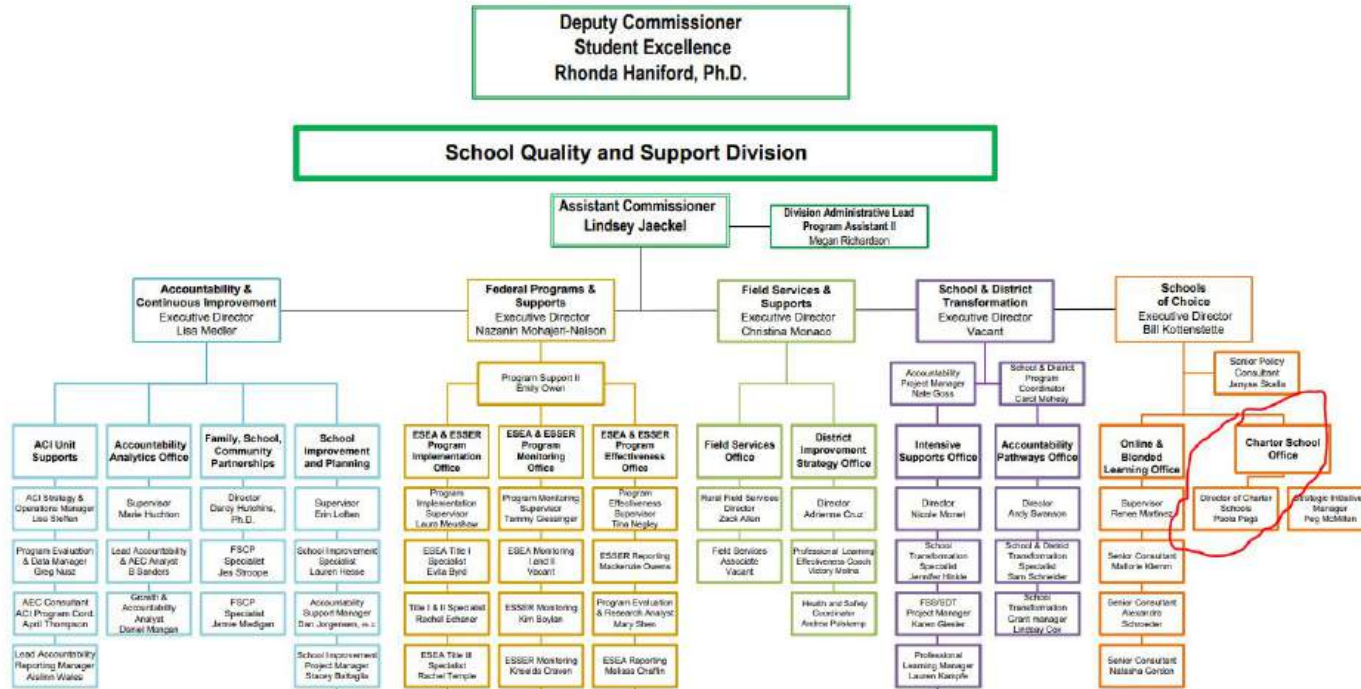
# Charter School Growth Over Time





# Organizational Change

# CDE and the Schools of Choice Unit, a Time of Change



**Promotional  
Congratulations!**

-Dr. Rhonda Haniford!

-Lindsey Jaeckel!

-Paola Paga!



# Theory of Change

## Our Vision

To create an equitable educational environment where *all* students and staff in Colorado thrive

## Our Role

To improve student outcomes and ensure students and families across Colorado have access to high-quality schools, we will:

### > SERVE

Provide actionable support to local educational agencies

### > GUIDE

Implement policy and legislation in an effective way

### > ELEVATE

Share the experiences of local educational agencies and students

**Our Core Values:** INTEGRITY | EQUITY | ACCOUNTABILITY | TRUST | SERVICE

## Our Priorities:

Increase Student Engagement

Accelerate Student Outcomes

Strengthen the Educator Workforce

Provide Operational Excellence



# Director of Charter Schools

## Key Activities:

- Strategic leadership
- Operational oversight for the charter office (with focus on SFIG)
- Facilitate cross-office collaboration
- Public representation





# Recent School Finance Activities





## HB24-1448 - New Public School Finance Formula

---

- New calculation for determining PPR levels for schools and districts
- Greater emphasis on student demographics (additional amounts for at-risk, multilingual learner, and special education statuses)
- Greater support for small/rural districts
- Phase-in period for districts and/or CSI schools when historic calculations are more favorable
- Targeted funding for Charter School Capital Assistance Program

# Did overall charter capital assistance increase?

Year	A. State Fund	+ B. Excise Tax Revenue to Charters	+C. "One-time" or HB24-1448 Funding	= D. Total Funding
FY22-23	\$ 23,939,893.00	\$ 14,669,783.00		\$ 38,609,676.00
FY23-24	\$ 24,379,016.00	\$ 8,855,662.60	\$ 10,000,000.00	\$ 43,234,678.60
FY24-25	\$ 23,935,468.00	\$ 7,457,233.96	\$ 11,500,000.00	\$ 42,892,701.96
FY25-26	\$ 24,287,686.51	\$ 7,643,864.37	\$ 12,000,000.00	\$ 43,931,550.88
FY26-27	\$ 24,641,675.07	\$ 8,491,264.33	\$ 13,000,000.00	\$ 46,132,939.40
FY27-28	\$ 24,995,663.64	\$ 9,063,803.42	\$ 14,000,000.00	\$ 48,059,467.06
FY28-29	\$ 25,349,652.21	\$ 9,666,187.54	\$ 15,000,000.00	\$ 50,015,839.75

# “1215 Task Force”

---

- Task Force charge: “develop and recommend policies, laws and rules to support the equitable and sustainable expansion and alignment of programs that integrate secondary, postsecondary, and work-based learning opportunities in every region of the state” (report found [here](#))
- [House Bill 24-1364](#) (re: Education-Based Workforce Readiness), was heavily informed by the 1215 Task Force, and **included a postsecondary workforce readiness cost study.**
- The final cost study report is due December 1, 2024, and will be posted to [this webpage](#) when it is available.

# School Finance Rulemaking

---

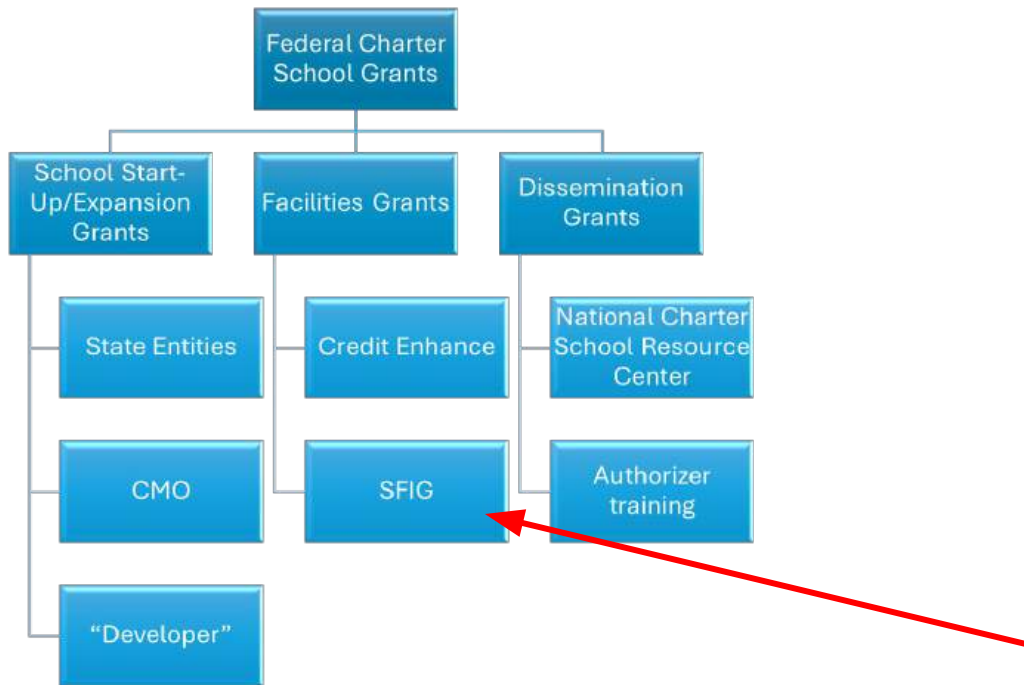
- Allowance for “Alternative Teacher-Pupil Instruction” for Grades 6-12
  - Requires use of published “Alternative Course Catalog”
  - Does not count parent-led instruction
  - More flexible definition of independent study. Will count one such class for seat time
- Eliminates requirements related to synchronous instruction and number of supplemental online/hybrid courses
- Clarifies that a teacher can be unlicensed when a school has a licensure waiver
- [Extensive guidance/videos](#) provided by audit team



# U.S. Dept of Ed - State Facilities Incentive Grant

# State Facilities Incentive Grant

- What is it?



# SFIG - Three Parts

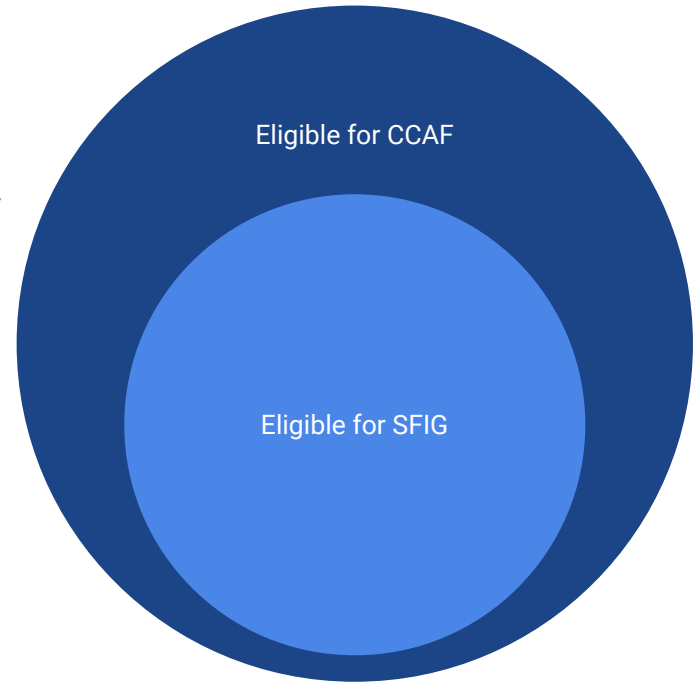
1. Subgrants to schools (95%)
2. Training Program - Charter Facilities  
Finance Certification
3. Evaluation – How are Colorado Charter  
Schools Doing with Facilities?





# SFIG Subgrants to Schools

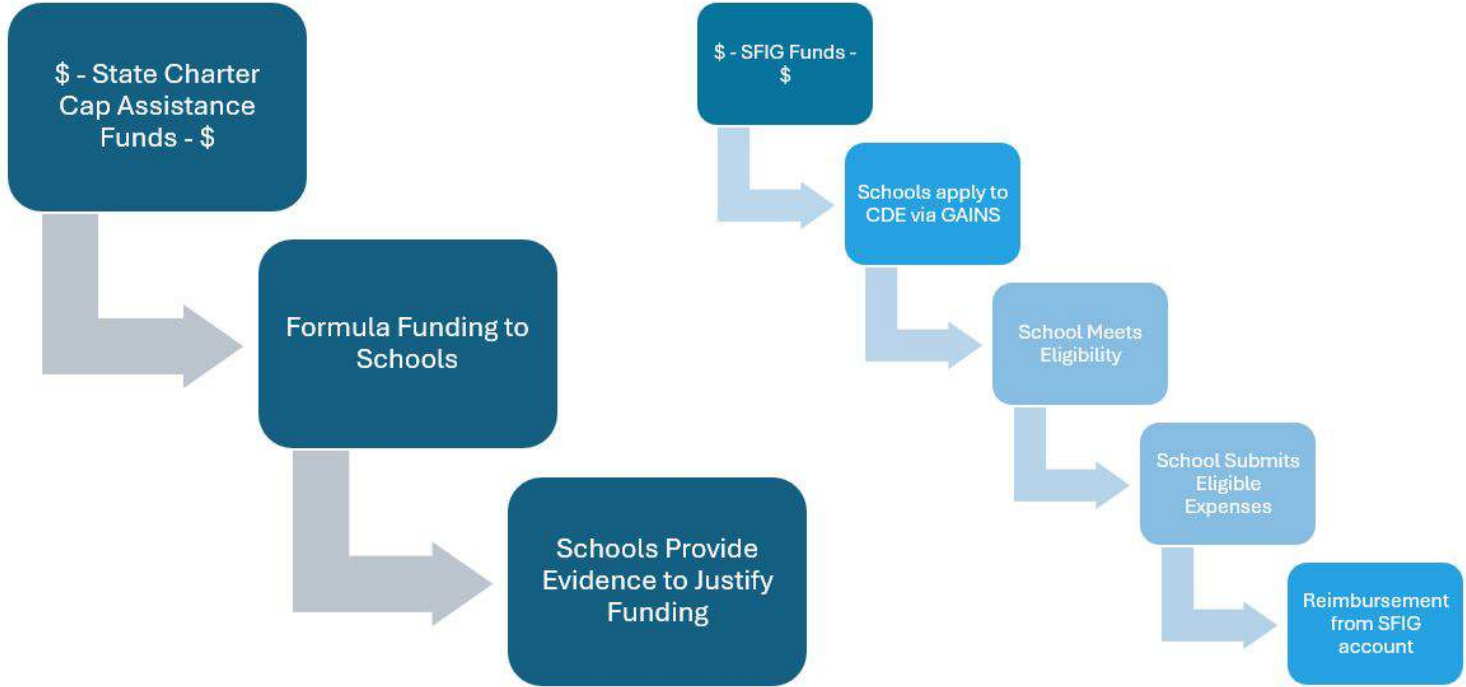
- A subgrant that complements the state Charter Capital Assistance Fund (CCAF)
- Functions similar to CCAF but managed separately
- Must meet Federal requirements
  - Definition of Charter School
  - Eligible Expenses
  - Supplement not Supplant
- Schools must apply for funding
- A reimbursement grant



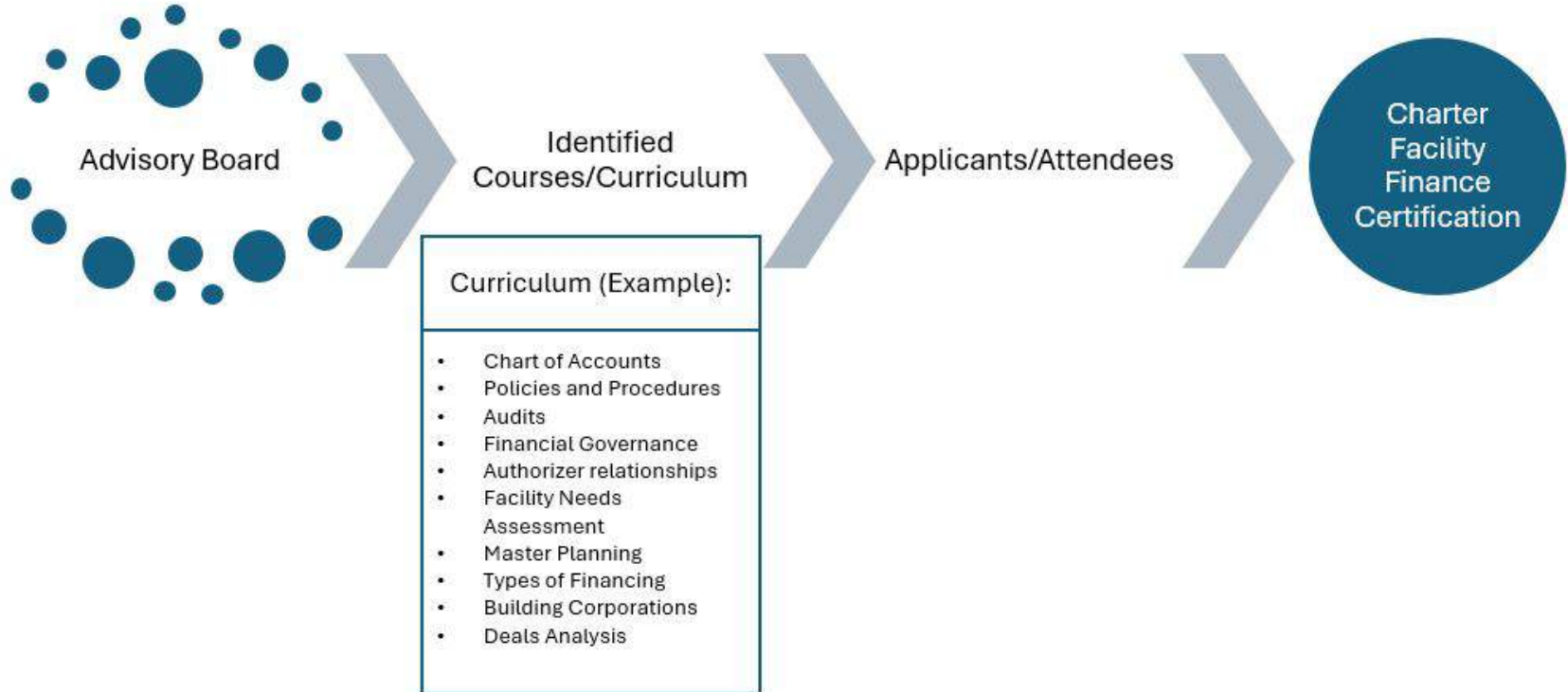
# State

Vs.

# Federal



# Training Program



# Evaluation

---

Questions to explore:

1. What is the facility funding gap for charter schools?
2. What are we learning from state facility assessments?
3. Are charter schools able to effectively access SFIG funding?
4. What leadership needs exist to support effective facilities planning for charter schools?



Thank you!