



**Colorado Charter Schools
Annual Conference**

February 25-27, 2026
Denver Marriott Tech Center



"If you want to go fast, go alone.
If you want to go far, go together."
— African proverb



PRESENTED BY



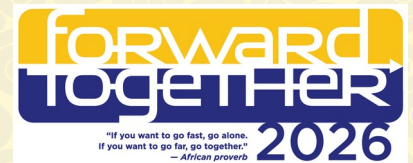
D|A|DAVIDSON
FIXED INCOME CAPITAL MARKETS

SEE THE CHANGE: Designing Future-Ready CTE Spaces Through Community Partnerships

Brooke Schubert, AIA, K-12, Lead
BVH Architects

Mark Shepard, K-12 Advisor
BVH Architects

Pikes Peak
February 27, 2026 | 8:30 am
Operations, Funding & Budgeting



“
The
conference
at your
fingertips.



DOWNLOAD THE APP

THANKS TO OUR GENEROUS SPONSORS

PRESENTED BY



D | A | DAVIDSON
FIXED INCOME CAPITAL MARKETS

JHL
CONSTRUCTORS
BUILDING COLORADO'S FUTURE



DIAMOND

gs
Gillem Staffing
Special Education Staffing



Staples

PLATINUM



 GroundFloor Media


SPARKSWILLSON, P.C.

Thank you.

Room Sponsor





We make it our priority to **advocate** for high-quality public charter schools across Colorado.



Be a part of the action.





COLORADO LEAGUE of
CHARTER SCHOOLS



BVH
ARCHITECTURE

**SEE THE CHANGE:
Designing Future-Ready CTE Spaces Through
Community Partnerships**

Friday February 27, 8:30 am



Cleve Reeves

AIA, ALEP

PRINCIPAL ARCHITECT
BVH Architecture



Brooke Schubert

AIA, LEED AP BD+C, NCARB

K-12 LEAD
BVH Architecture



Mark Shepard

K-12 ADVISOR
BVH Architecture

Agenda

01

From Roots to Routes

02

Design Toward the Destination

03

Fuel for the Future

04

Success in the Spotlight

Career Technical Education (CTE):

A system of education that prepares students for High **SKILL**, High **WAGE**, High **DEMAND** careers by combining academic knowledge with industry informed hands-on relevant, real world skill training.

From Roots to Routes:

Grounding CTE with Local Industry Needs

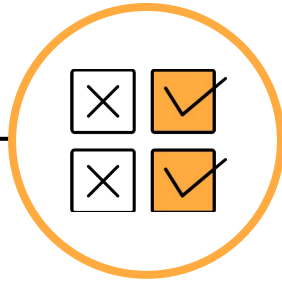
Defining the Program(s)



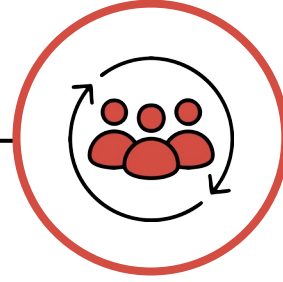
CONCEPT INTRODUCTION
/ FEEDBACK SESSIONS



INDUSTRY PARTNER
MEETINGS



ESTABLISH
PRIORITIES



ENGAGE COMMUNITY /
EDUCATORS



GATHER SUPPORT

ESTABLISH CONCEPT / NEEDS

CREATE THE PROGRAM(S)

SUSTAINABILITY

Identifying the Need



CONCEPT INTRODUCTION
/ FEEDBACK SESSIONS



INDUSTRY PARTNER MEETINGS

FOCUS ON COMMUNITY & INDUSTRY NEEDS

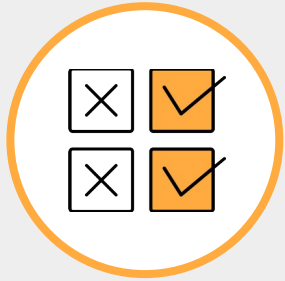
Local & Regional Needs

- Identify local / regional needs
- What are the local opportunities?

Community Partnerships

- Real-World Teaching and Learning
- Industry Relevance
- Student Career Connections
- *Brain Gain... NOT Brain Drain!*

Program Review & Selection



ESTABLISH PRIORITIES

FOCUS ON COMMUNITY & INDUSTRY NEEDS

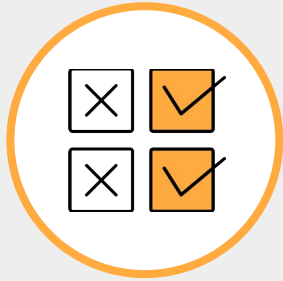
Industry & Student-Informed Programming

- Based on Data Gathered from Industry
- Based on Student Interest Survey
- Student Career Opportunities

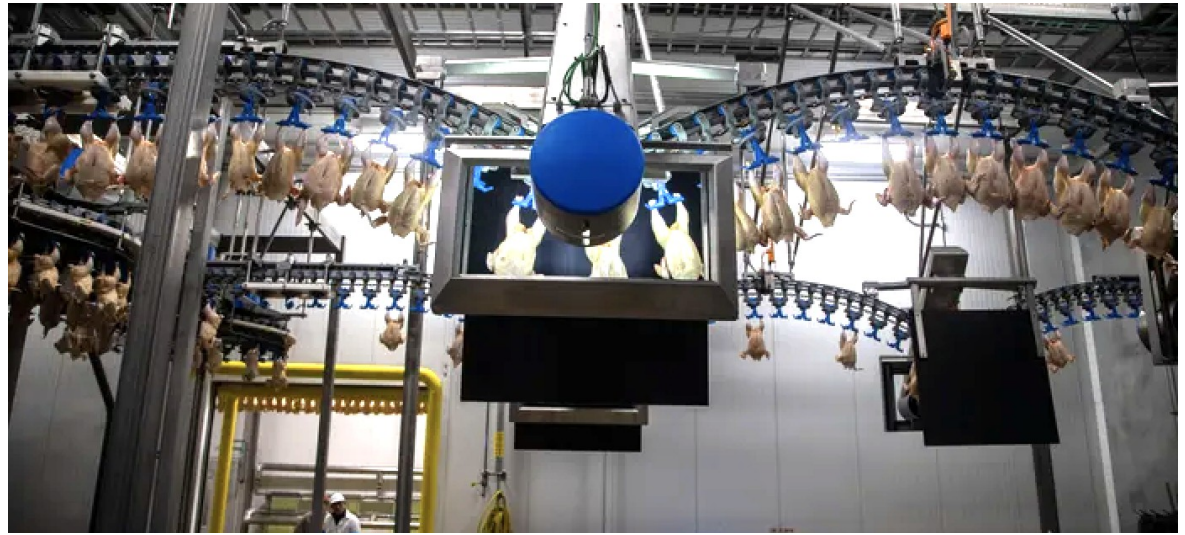
High Wage + High Skill + High Demand

- Set Students on a Path for Success
- Means to a Beginning!

Program Review & Selection



ESTABLISH PRIORITIES



Lincoln Premium Poultry

Stakeholder Feedback & Support



ENGAGE COMMUNITY
/ EDUCATORS

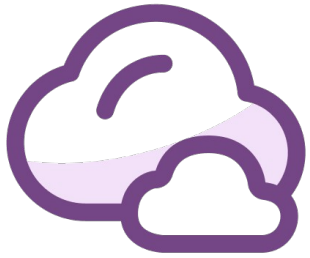
FEATURES

- Community Input Leads to Support
- Career Focused Programs
- Industry Relevant Skill Development
- K-12 + HIED + Industry Partnerships
- 1+1, 1+1+2, 1+3, 2+2
- Co-Branding
- Who's Responsible for What?

Design Toward the Destination:



Spaces Aligned to Industry & Student Goals



What are the local, relevant industries in your area?



CTE Space Layout & Planning

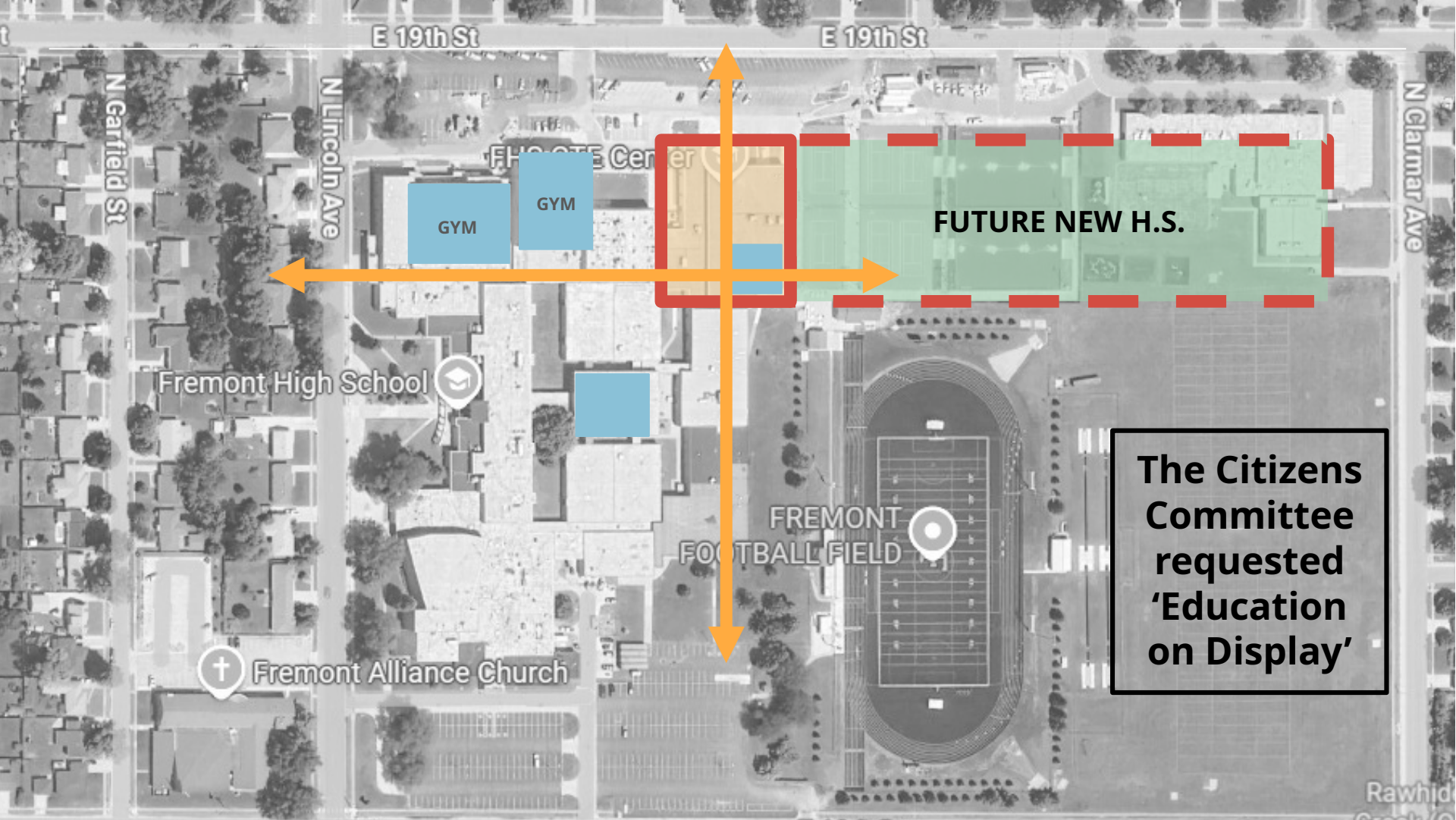
FEATURES

- Flexibility for the Future
- Exposure to General Student Population / Public
- Connection and Exposure to Engaged Students
- Specialty Spaces / Equipment



Fremont Public Schools CTE
FREMONT, NE





E 19th St

E 19th St

N Garfield St

N Lincoln Ave

N Clarmar Ave

FHS CTE Center

GYM

GYM

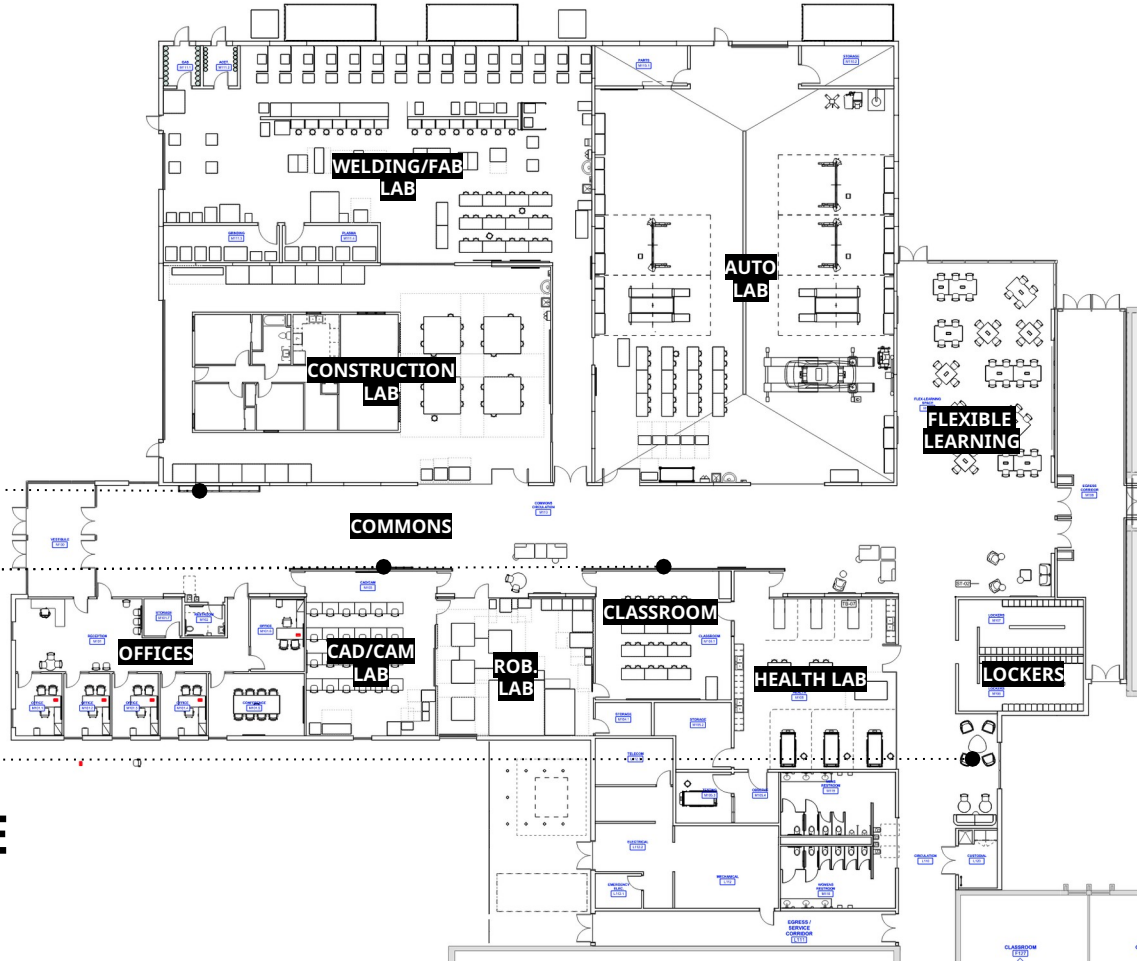
FUTURE NEW H.S.

Fremont High School

Fremont Alliance Church

FREMONT FOOTBALL FIELD

The Citizens Committee requested 'Education on Display'



DISPLAY CASE

INTERACTIVE DISPLAY WALLS

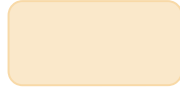
FLEXIBLE LEARNING AREAS

Fremont Public Schools CTE

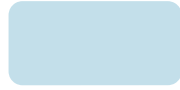
FREMONT, NE



DIRTY LAB



CLEAN LAB

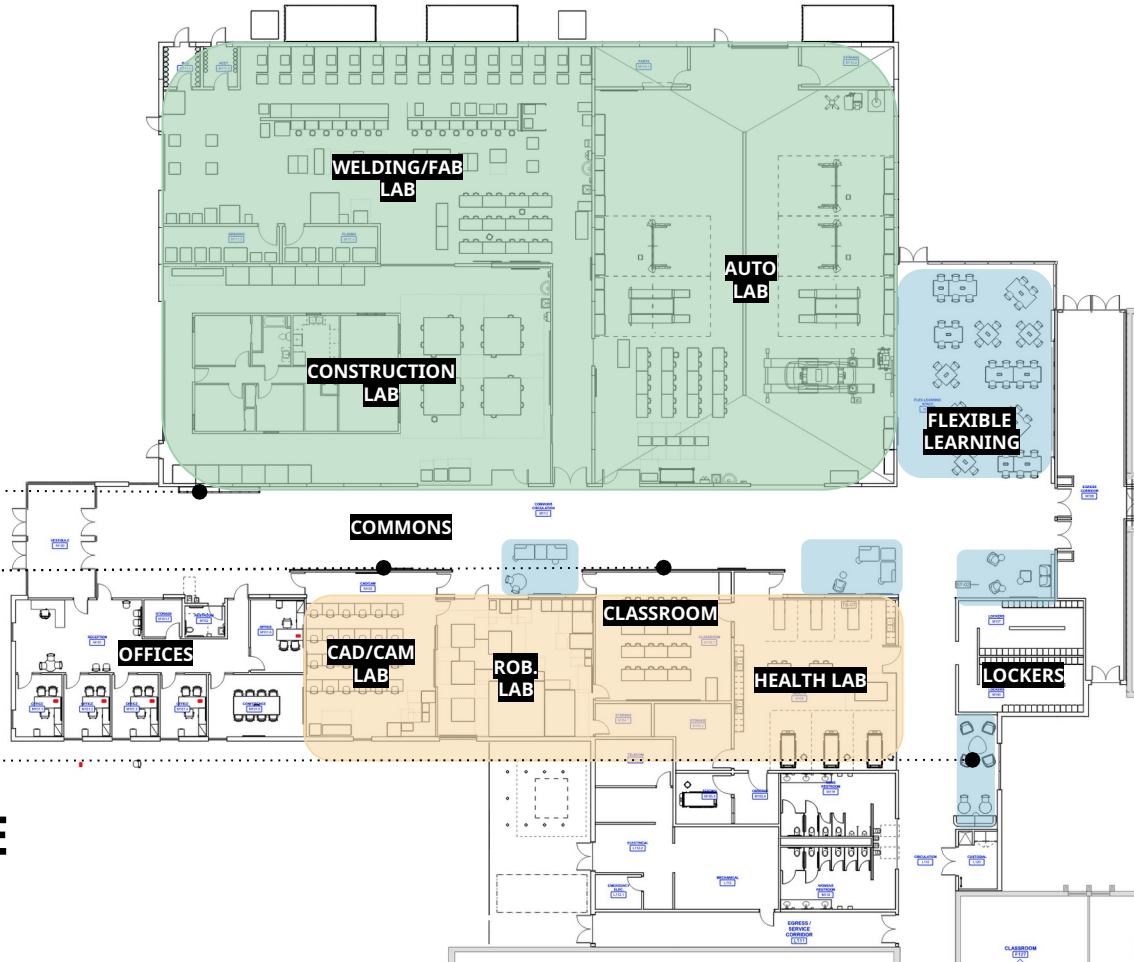


COLLAB SPACE

DISPLAY CASE

INTERACTIVE DISPLAY WALLS

FLEXIBLE LEARNING AREAS



Fremont Public Schools CTE

FREMONT, NE

Windows Into the Classroom



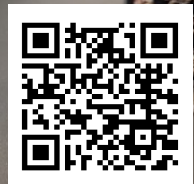
SPECIALTY SPACES / EQUIPMENT



CONSTRUCTION + TRADES



Health Occupations



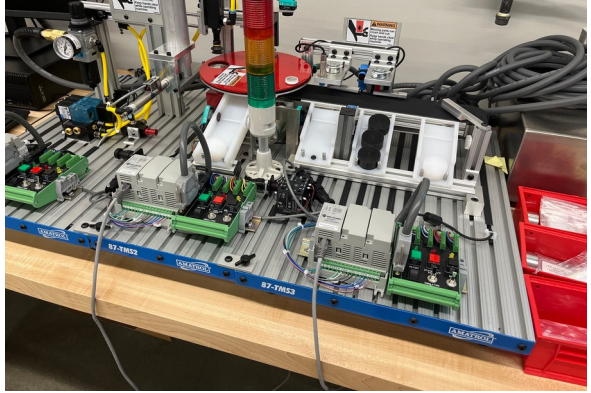
RN



LPN



MECHATRONICS - AUTOMATION / ROBOTICS



WELDING - METAL FABRICATION



AUTOMOTIVE - DIESEL - POWER SPORTS



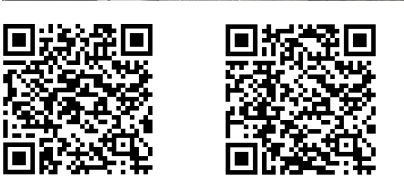
Auto

Diesel

Power Sports



COMPUTER AIDED DESIGN + MANUFACTURING



Architectural Design Tech

Mechanical Design Tech



CULINARY ARTS





Umo'ho' Nation 'Against the Current' Career Academy

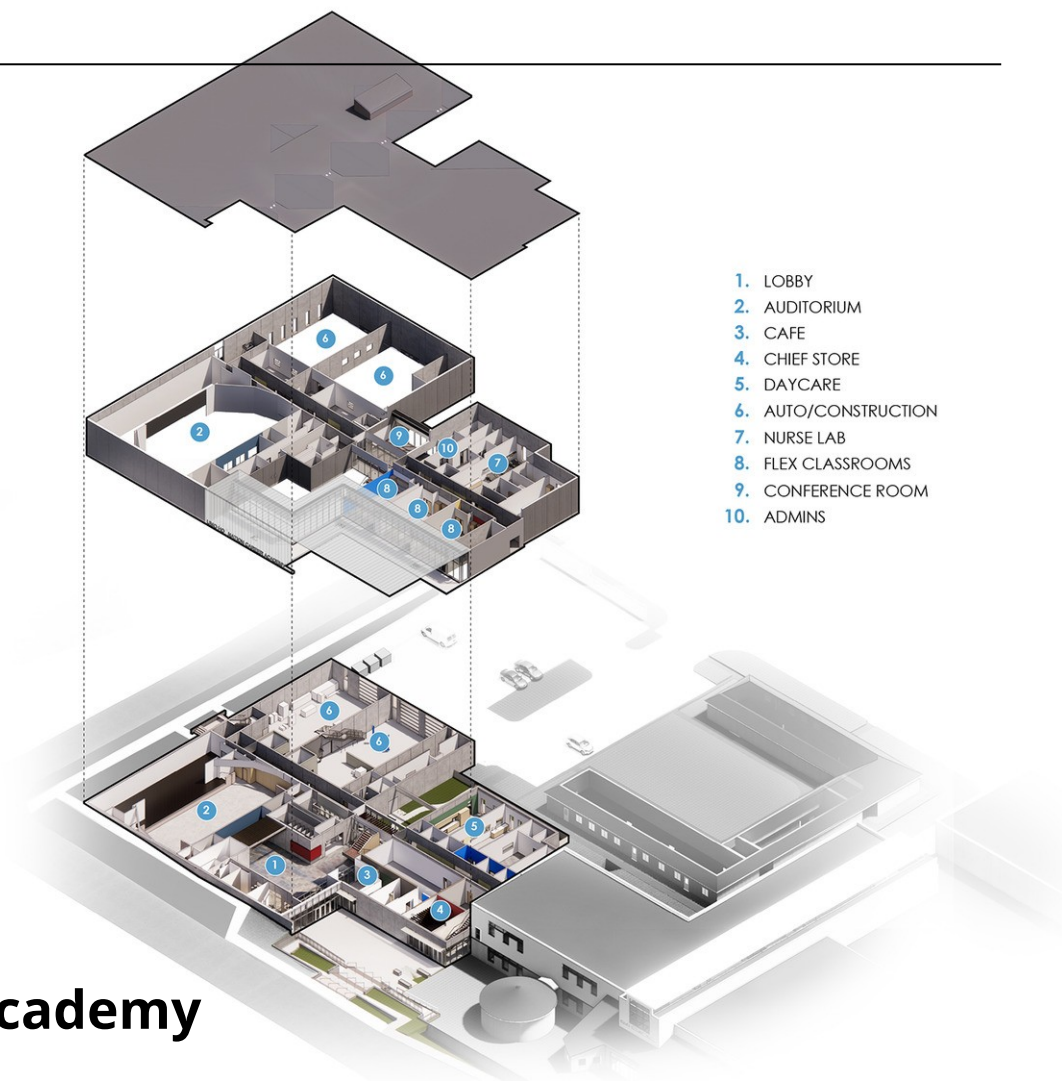
MACY, NE





Umo^hoⁿ Nation 'Against the Current' Career Academy

MACY, NE



Umo^{ho}n Nation Against the Current' Career Academy

MACY, NE



Umonhoᵐ Nation
'Against the Current' Career Academy

MACY, NE



Over the last eight years...

1,057
Total Credits Earned



AGAINST THE CURRENT
CAREER ACADEMY

\$179,690

In Tuition Saved for UNPS Students



Health Care / Nursing:

- CNA Certification
- Med Aide Certification



Early Childhood:

- CDA Certification



Construction:

- OSHA Certification



Automotive:

We are currently an NC3 Certification Center and offer the following certifications:

- Wheel Balancing Basics
- Pro-Q&R Rotor Matching Certification
- Tire Fundamentals
- Alignment Fundamentals
- ShopKey Pro Service & Repair Information Level 1 Certification
- PMS 1- Tune and Rule Measurement



Entrepreneurship:

- Microsoft Office Certification
- Microsoft excel Certification
- Small business / Entrepreneurship Certification



Culinary:

- SafeServe Certification
- Cottage Law Certification

15

Certifications for UNPS students to enhance their resumes and demonstrate valuable job skills.



1,057
Total Credits Earned

\$179,690

In Tuition Saved for UNPS Students

15

Certifications for UNPS students to enhance their resumes and demonstrate valuable job skills.

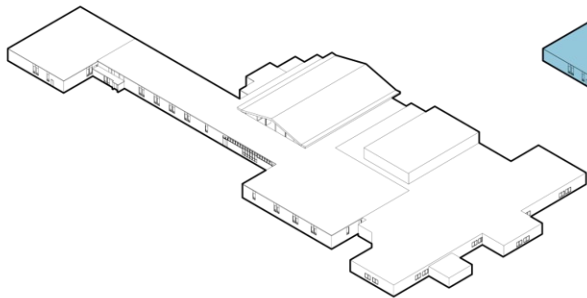
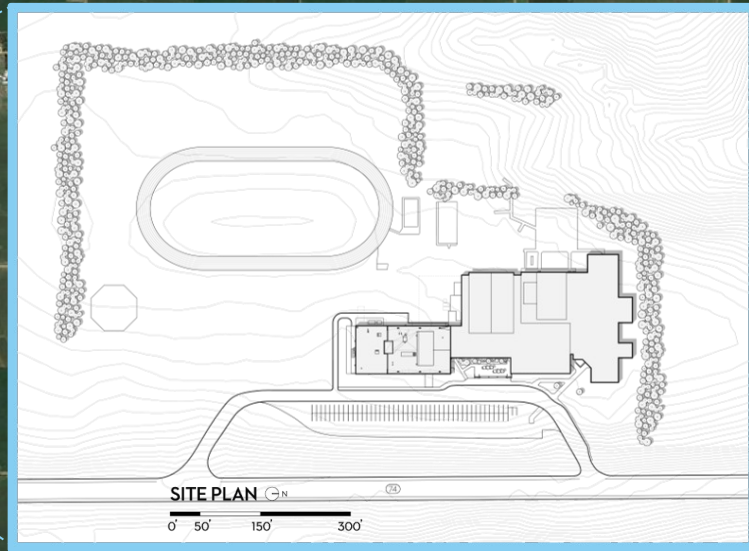
The school cafe, daycare and auto repair facilities, provide badly needed community services.

Umoⁿhoⁿ Nation 'Against the Current' Career Academy

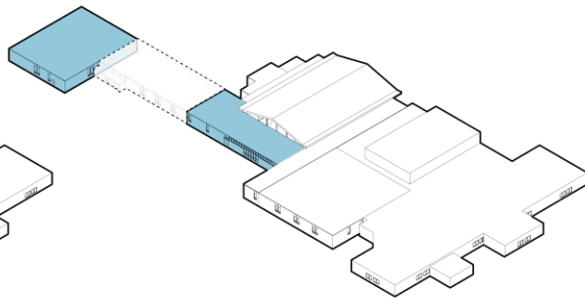
MACY, NE

Sandy Creek HS

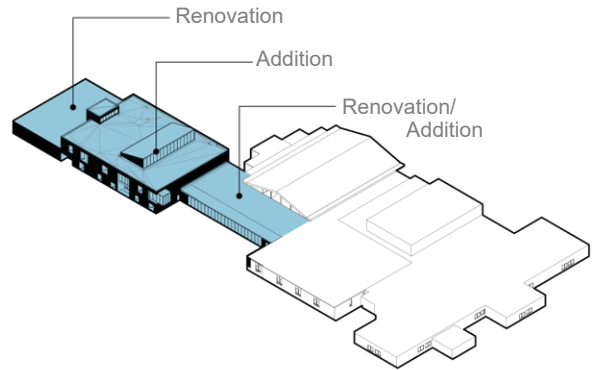
Fairfield, NE



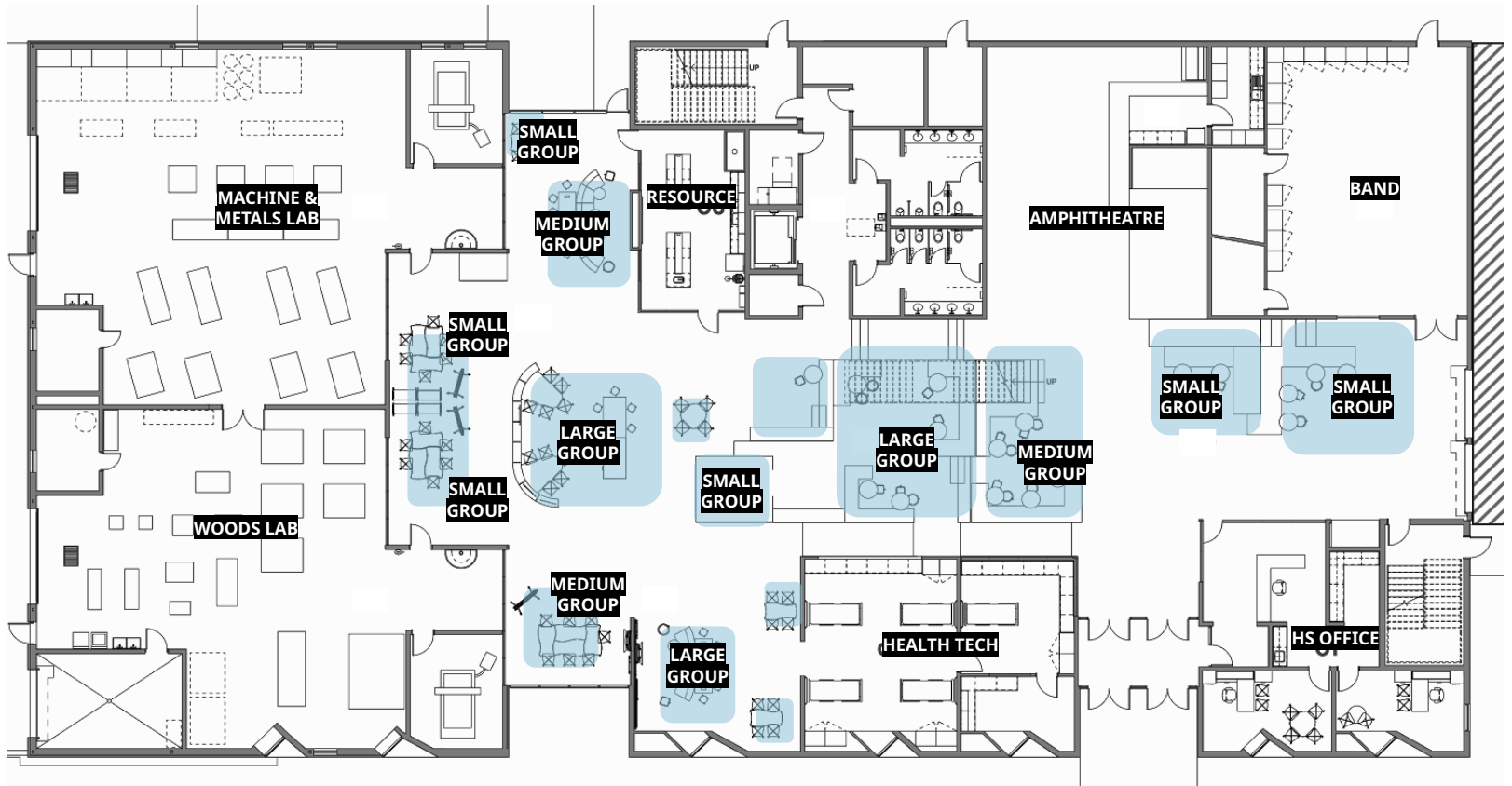
Existing



Removal

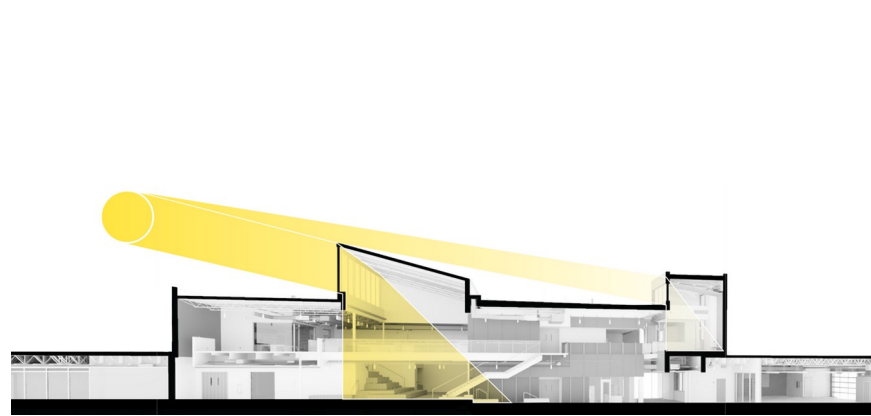


Insertion



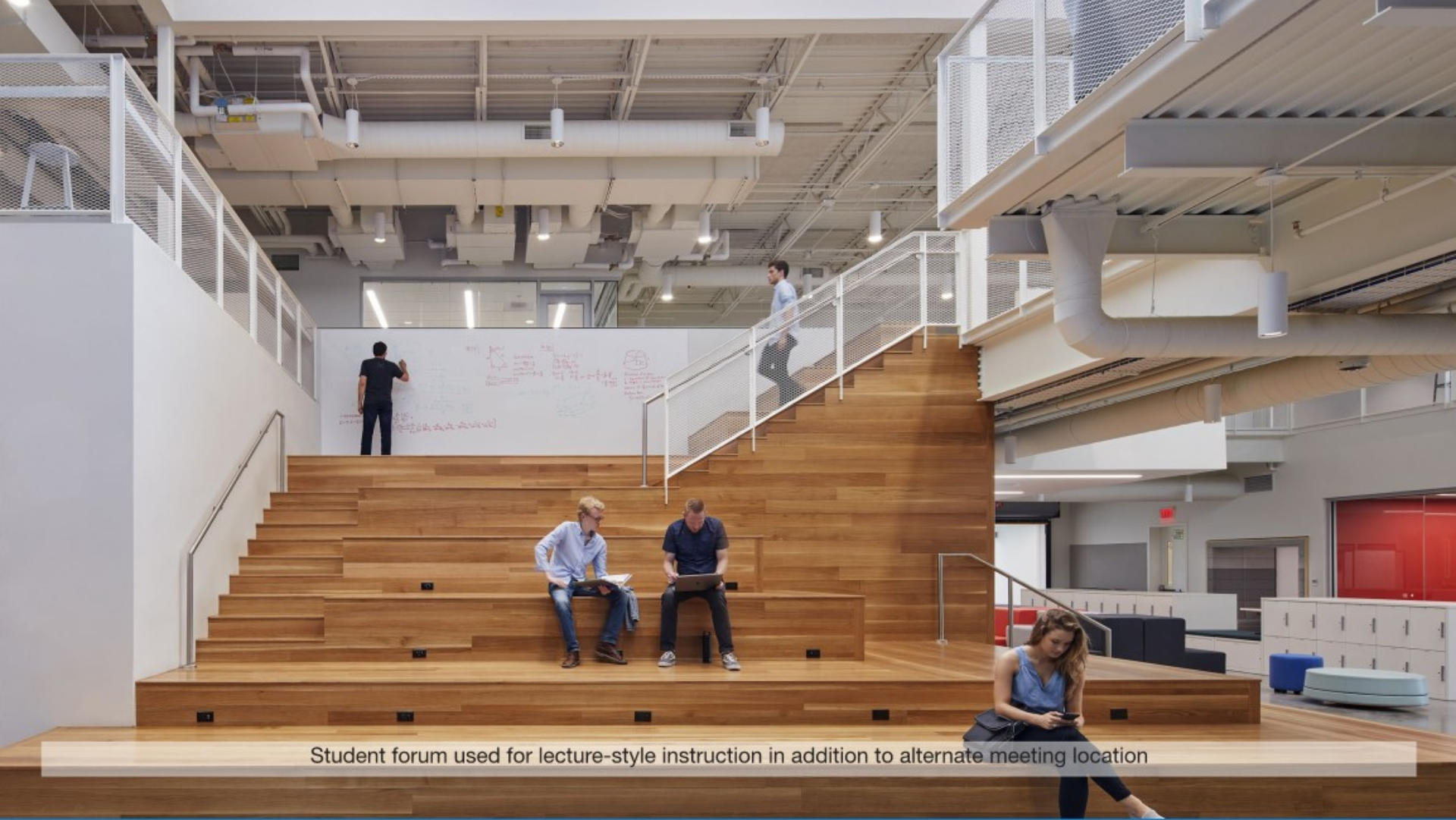
NCAPS at Sandy Creek HS

FAIRFIELD, NE

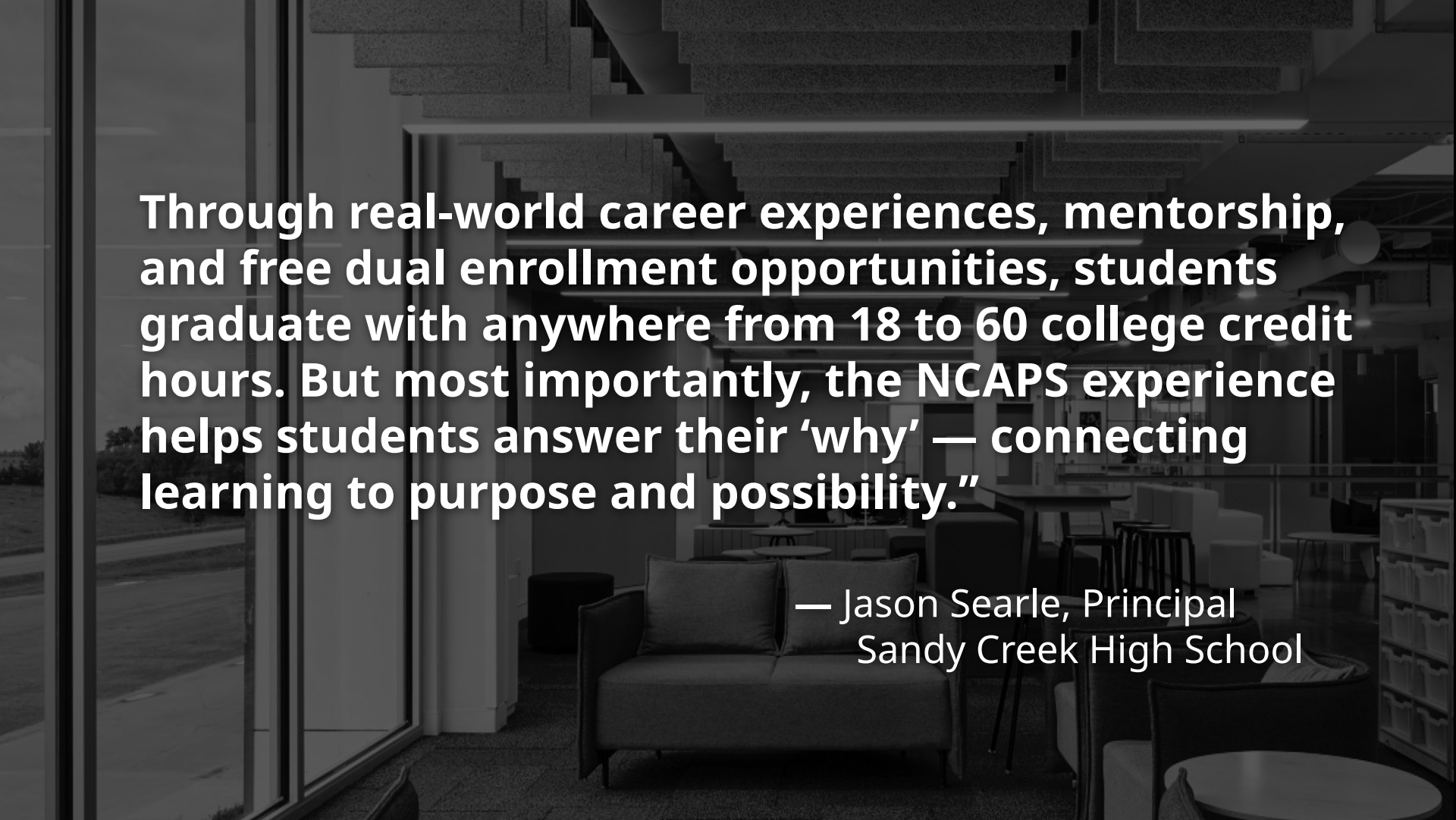




Student learning commons adjacent to medical suite



Student forum used for lecture-style instruction in addition to alternate meeting location



Through real-world career experiences, mentorship, and free dual enrollment opportunities, students graduate with anywhere from 18 to 60 college credit hours. But most importantly, the NCAPS experience helps students answer their 'why' — connecting learning to purpose and possibility."

**— Jason Searle, Principal
Sandy Creek High School**

Fuel for the Future:

Sustainable Funding to Keep CTE Thriving



Stakeholder Feedback & Support



GATHER SUPPORT

FINANCIAL SUPPORT

Public Funds

- Carl Perkins - through LEA
- State Workforce Grants
 - Opportunity Now (Regional Talent Development Initiative)
 - Apprenticeship Colorado Youth Engagement Grants
 - Homegrown Talent Initiative (HTI)
 - SB25-315 Start-Up & Sustaining Funds
 - Buckner Innovation Fund
- Capital Construction Funds
- CC & School District Budgets
- Per Pupil Funding/Dual Enrollment

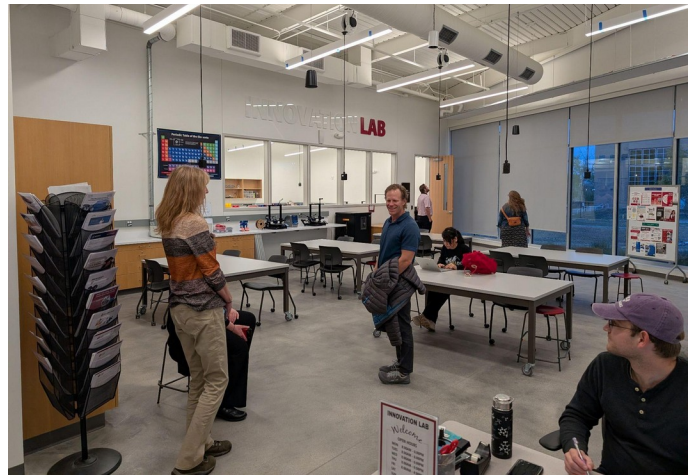
Private Funds

- Foundations
- School, College, Private
- Industry Partners/In-Kind Donations



Community College of Aurora (CCA)
Center for Applied Science and Technology

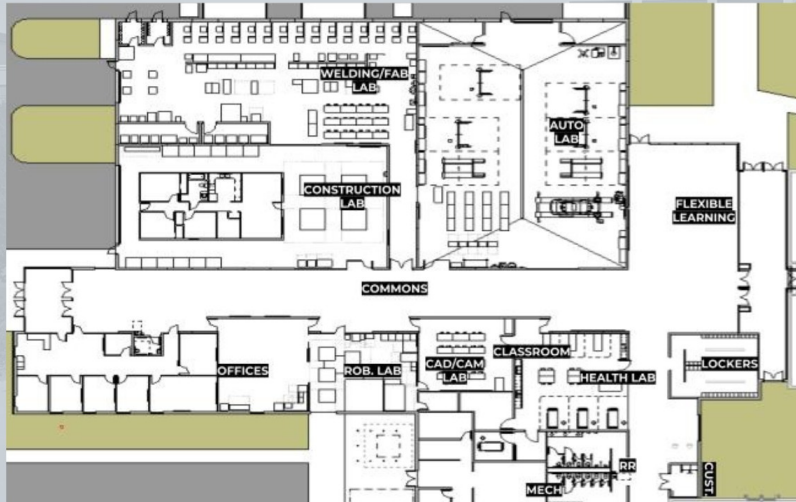
AURORA, CO





FREMONT HIGH SCHOOL

CAREER TECHNICAL EDUCATION CENTER



Sponsorship Opportunities

CORNERSTONE

\$20,000 per year for 5 years

EXECUTIVE

\$10,000 per year for 5 years

DEVELOPER

\$5,000 per year for 5 years

DIRECTOR

\$3,000 per year for 5 years

ASSOCIATE

\$2,000 per year for 5 years

PARTNER

\$1,000 per year for 5 years

In-kind donations are appreciated and will be considered by FPS and the Foundation. Valuations of in-kind donations will be mutually agreed upon and recognition will be provided based on the value.



Fremont High School CTE Sponsorship Opportunities

	CORNERSTONE (\$20,000+ PER YEAR FOR 5 YEARS)	EXECUTIVE (\$10,000 PER YEAR FOR 5 YEARS)	DEVELOPER (\$5,000 PER YEAR FOR 5 YEARS)	DIRECTOR (\$3,000 PER YEAR FOR 5 YEARS)	ASSOCIATE (\$2,000 PER YEAR FOR 5 YEARS)	PARTNER (\$1,000 PER YEAR FOR 5 YEARS)
DONOR WALL	✓	✓	✓	✓	✓	✓
CAREER FAIR BOOTH	✓	✓	✓	✓	✓	✓
RECOGNITION IN PUBLICATIONS/PRESS RELEASES	✓	✓	✓	✓	✓	
ACCESS TO CTE COMMONS	✓	✓	✓	✓	✓	
ACCESS TO LECTURE HALL	✓	✓	✓	✓		
CTE CLASS PRESENTATION(S)	✓	✓	✓	✓		
INTERVIEW/RECRUITMENT FAIR	✓	✓	✓			
LOGO IN LAB OF CHOICE	✓	✓	✓			
BRANDED LOGO ON STUDENT GEAR	✓	✓				
VIDEO WALL REPRESENTATION	✓					
DONOR WALL LOGO	✓					

IN-KIND DONATIONS ARE APPRECIATED AND WILL BE CONSIDERED BY FPS AND THE FOUNDATION.
VALUATIONS OF IN-KIND DONATIONS WILL BE MUTUALLY AGREED UPON AND RECOGNITION WILL BE
PROVIDED BASED ON THE VALUE.

FOR MORE INFORMATION ON DONATING, PLEASE CONTACT:

MARK SHEPARD | mark.shepard@fpsmail.org
SCOTT JENSEN | scott.jensen@fpsmail.org
KEVIN EAIRLEYWINE | kevin.eairleywine@fpsmail.org



CORNERSTONE

 ROBERT B. DAUGHERTY
FOUNDATION



Lincoln Premium
Poultry

SID DILLON



FREMONT, NE



Dale Olson
j. skinner



RVR Bank



Success in the Spotlight:



Showcasing Achievement, Connection & Impact

Students Succeeding



GOALS ACHIEVED

END GOAL ACHIEVED!

Results

- Reduced discipline / Engaged students
- High Wage Jobs
- Fremont Public School
 - 80 welders over 9 years
 - \$26/hour minimum
- Brain Gain
- Economic Growth

Students Succeeding



GOALS ACHIEVED

END GOAL ACHIEVED!

**This is a means to a beginning,
not a means to an end.**

- Straight to industry
- On to a technical training
- Further education at 4-year institution

**Celebrate!
Industry
Signing Day!**



**STRUCTURAL
COMPONENT
SYSTEMS**



**Heidi
Corona**



**Wilfry
Mendez
Rodriguez**



**Oscar
Nunez**



**Juan
Raymundo
Domingo**



**Jorge
Omar
Rodriguez**



**Christian
Ferreira
Raymundo**



Questions?



**“
Your
feedback
helps us all
move forward
together**



**Colorado League of
Charter Schools**

Each time you take the survey you can enter to win prizes